

BROOKLINE HIGH SCHOOL EXPANSION

BHS EXPANSION ADVISORY BUILDING COMMITTEE MEETING
March 27, 2019



BROOKLINE HIGH SCHOOL EXPANSION PROJECT



SCOPE OF BROOKLINE HIGH SCHOOL EXPANSION PROJECT





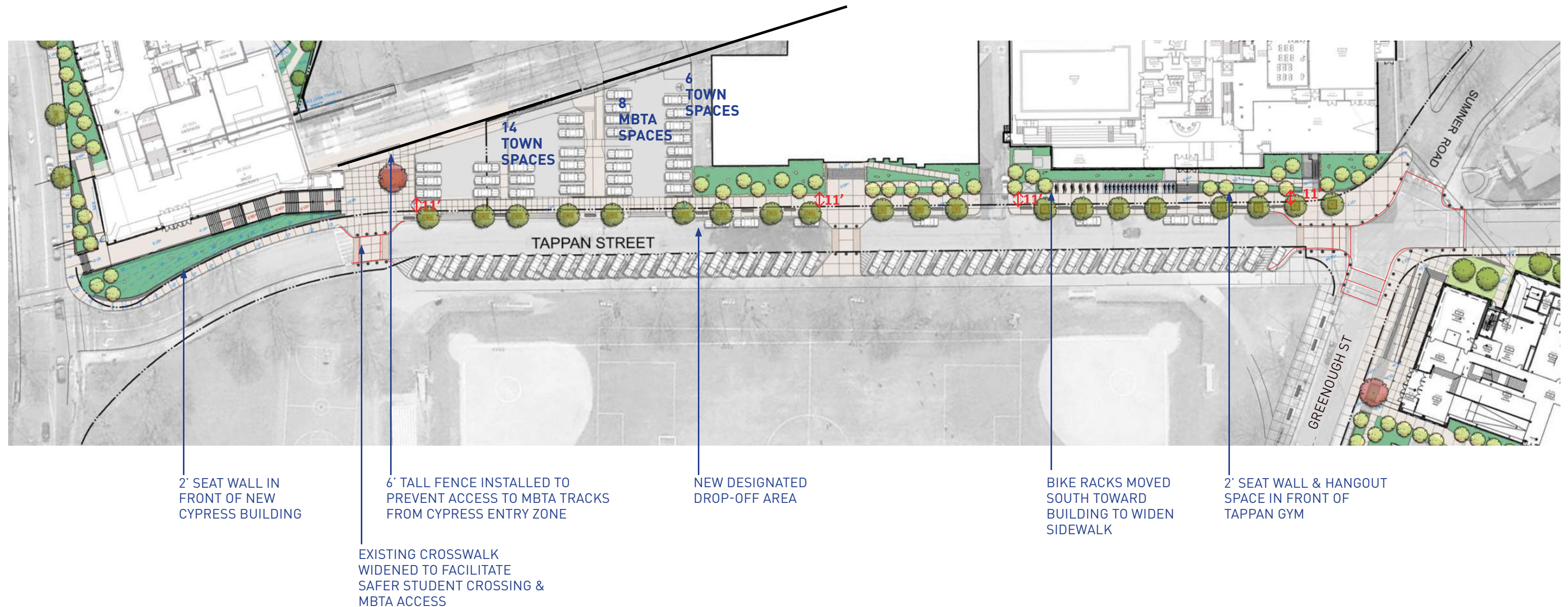


CYPRESS BUILDING: A CIVIC PRESENCE



CREATE A UNIFIED CAMPUS: A TRANSFORMED TAPPAN STREETScape

- The sidewalk has been increased from 6' to 11' wide continuously, with an additional 4' of planting and seating zone
- New trees along Tappan Street create continuity with Greenough facades
- Benches along Greenough Street popular with students; concept brought to Tappan Street

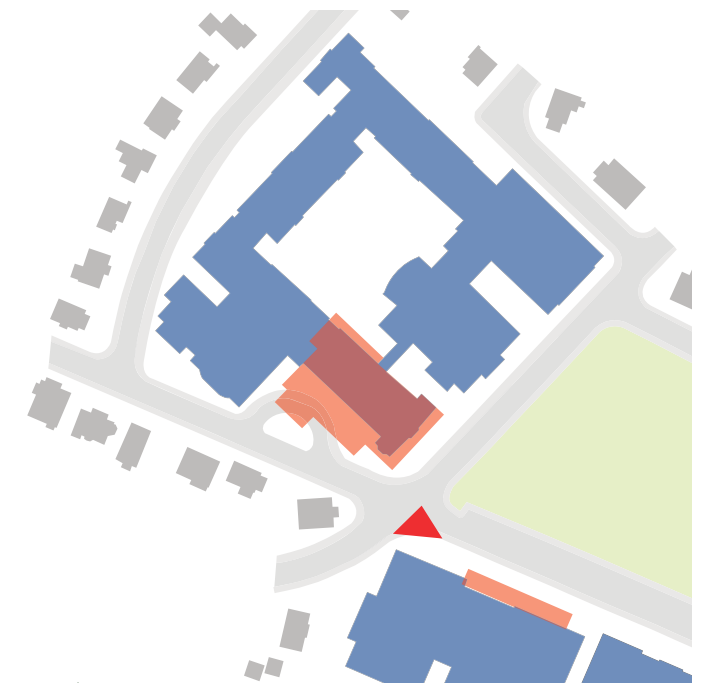




GREENOUGH STREET

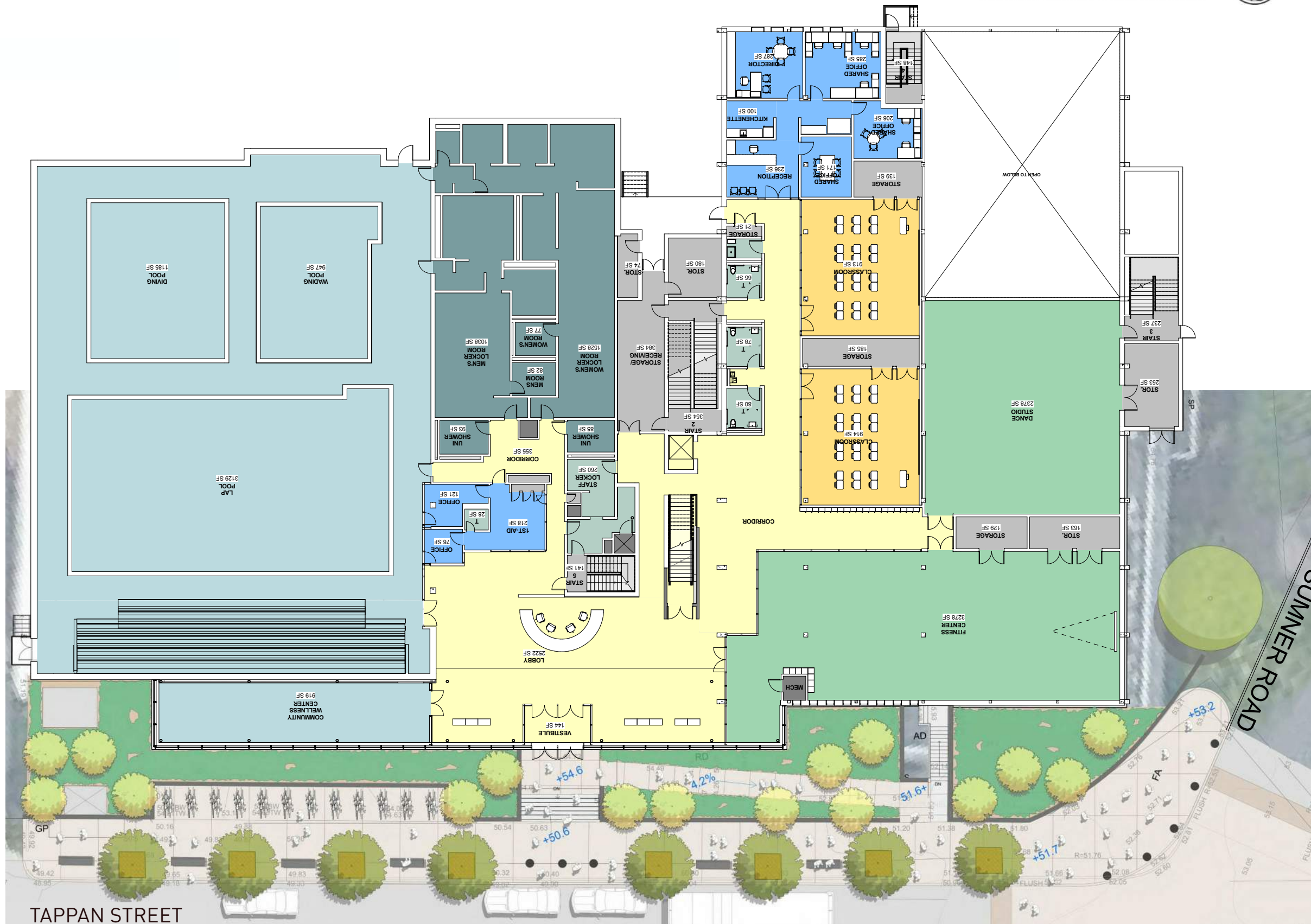


STEM WING



TAPPAN ATHLETIC COMPLEX

LEVEL 1 PLAN



1/8" = 1'-0"



TAPPAN ATHLETIC COMPLEX



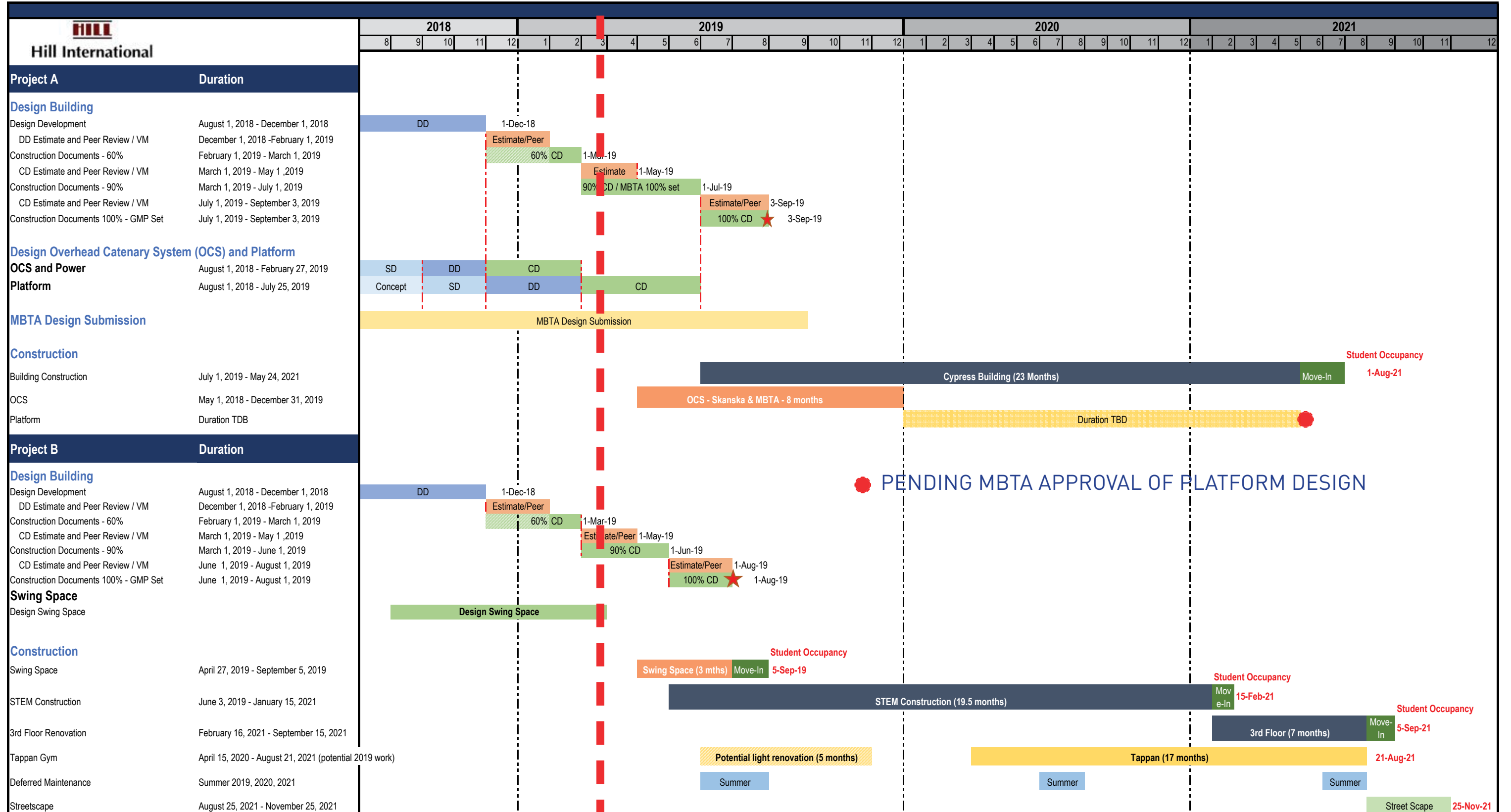
BROOKLINE HIGH SCHOOL EXPANSION PROJECT



SCHEDULE UPDATE

February 13, 2019

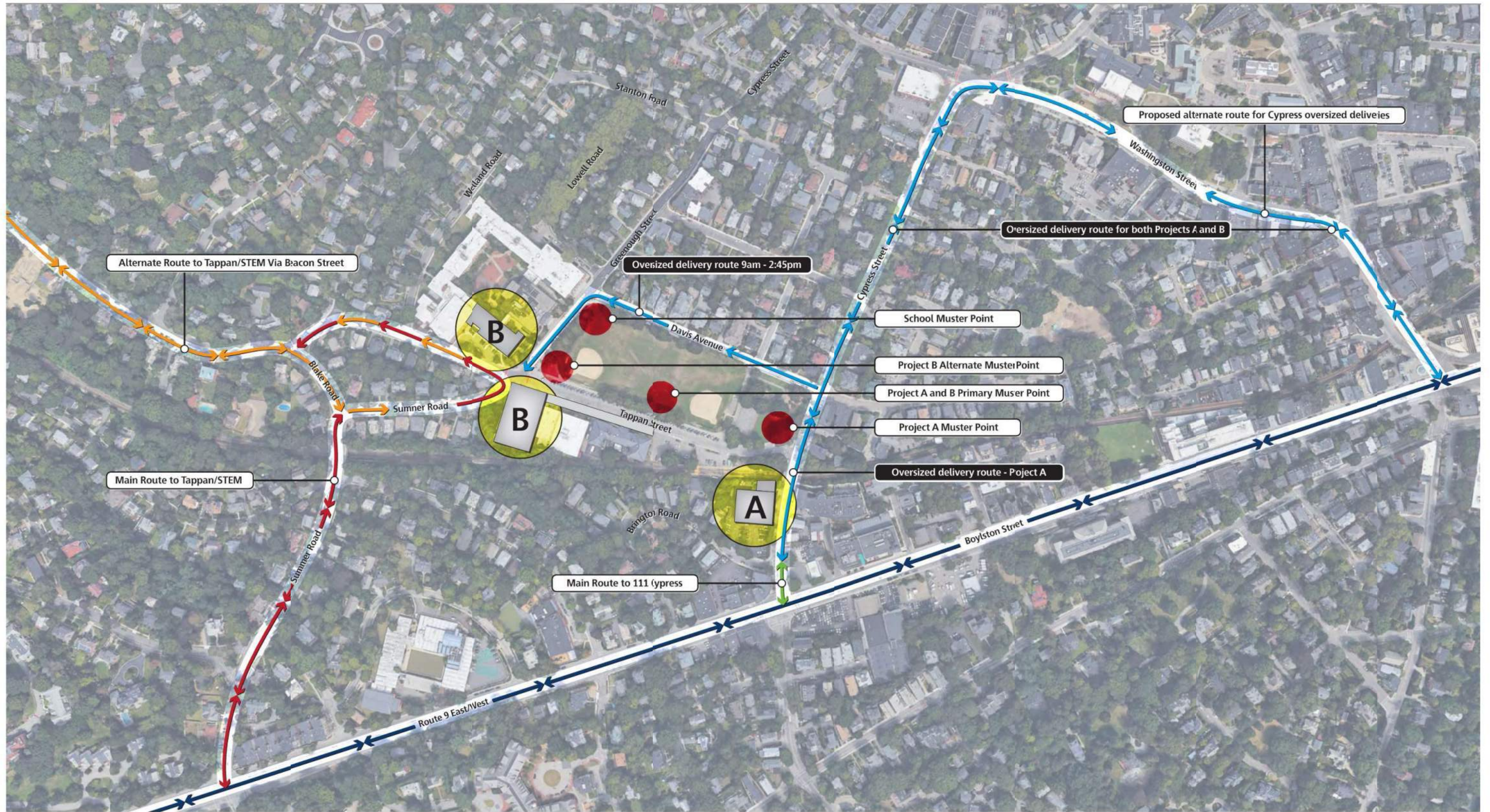
Brookline High School Expansion Project PRELIMINARY Summary Schedule



CONSTRUCTION PHASING AND LOGISTICS PLAN

- Safety – Students / Staff / Public
- Separation from Construction Activity
- Pedestrian Routes / Street Crossing
- Occupied Building Construction Activity
- Traffic Controls / Deliveries
- Work Sequence / Durations



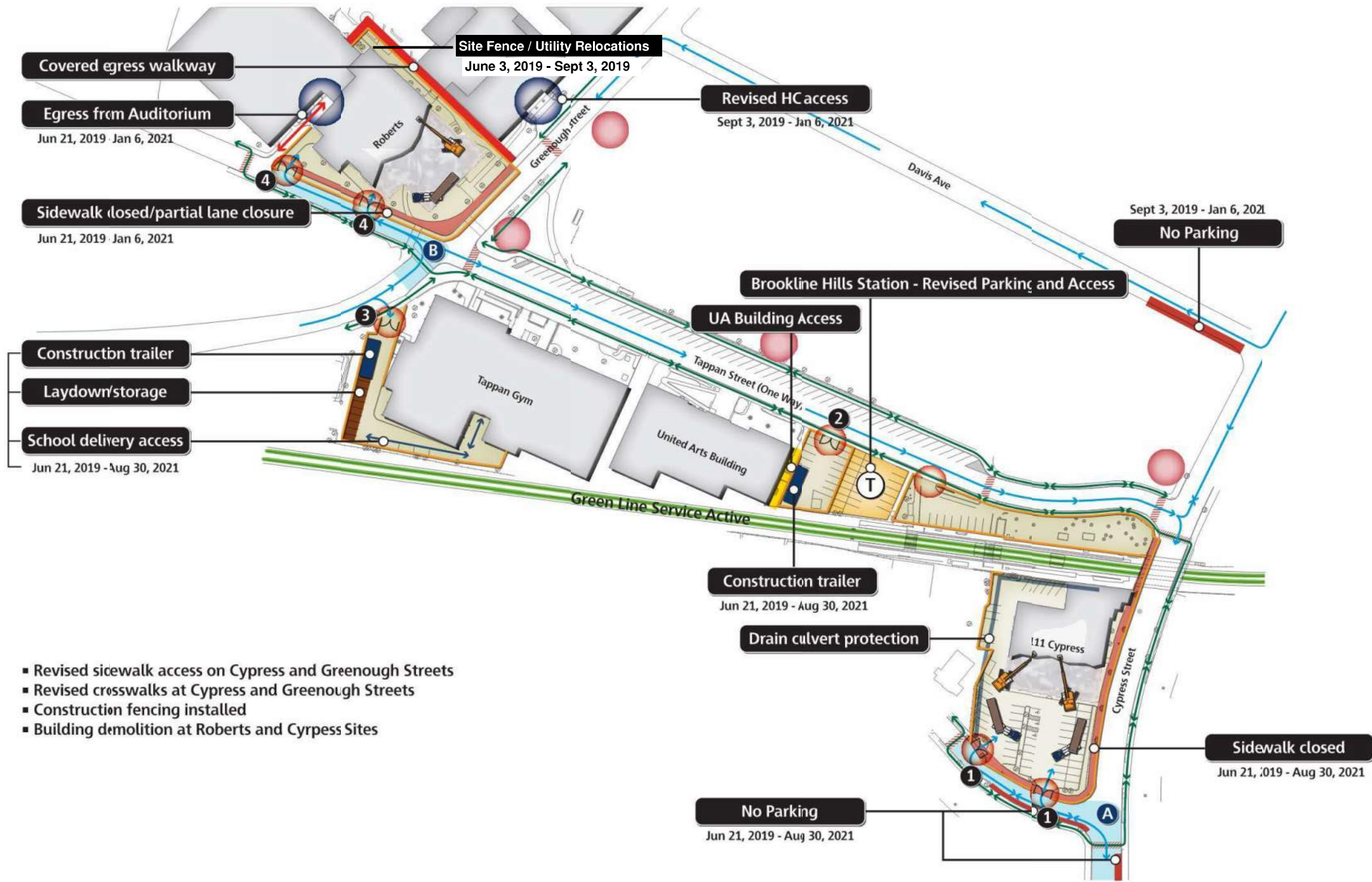


Brookline High School
Brookline, MA

Preliminary Draft Truck Route

Scale: NTS





Covered egress walkway
Jun 21, 2019 - Jan 6, 2021

Egress from Auditorium
Jun 21, 2019 - Jan 6, 2021

Sidewalk closed/partial lane closure
Jun 21, 2019 - Jan 6, 2021

Construction trailer
Jun 21, 2019 - Aug 30, 2021

Laydown/storage
Jun 21, 2019 - Aug 30, 2021

School delivery access
Jun 21, 2019 - Aug 30, 2021

Site Fence / Utility Relocations
June 3, 2019 - Sept 3, 2019

Revised HC Access
Sept 3, 2019 - Jan 6, 2021

No Parking
Sept 3, 2019 - Jan 6, 2021

Brookline Hills Station - Revised Parking and Access

UA Building Access

Construction trailer
Jun 21, 2019 - Aug 30, 2021

Drain culvert protection

Sidewalk closed
Jun 21, 2019 - Aug 30, 2021

No Parking
Jun 21, 2019 - Aug 30, 2021

- Revised sidewalk access on Cypress and Greenough Streets
- Revised crosswalks at Cypress and Greenough Streets
- Construction fencing installed
- Building demolition at Roberts and Cypress Sites

Phase 1

Mobilize, Site Fence, Field Office and Building Demolition

111 Cypress:

- Abatement
- Cut/cap utilities
- Building demolition
- Close sidewalks

Brookline Hills T:

- Mobilize
- Relocate parking
- Relocate ticket/pay park

Tappan Gym:

- Temporary service
- Set trailers
- Basement footings

Roberts:

- Relocate existing utilities
- Abatement
- Temporary interior walls
- Close courtyard outh access
- Building demolition

Traffic/Deliveries:

- 30 per day
- A** Traffic holds north & south at Cypress deliveries
- B** Traffic holds at Tappan/Greenough for deliveries
- Police details required

Construction Key

- Construction gate
- Construction fence
- Construction traffic
- Pedestrian flow
- Temporary crosswalk
- Muster area

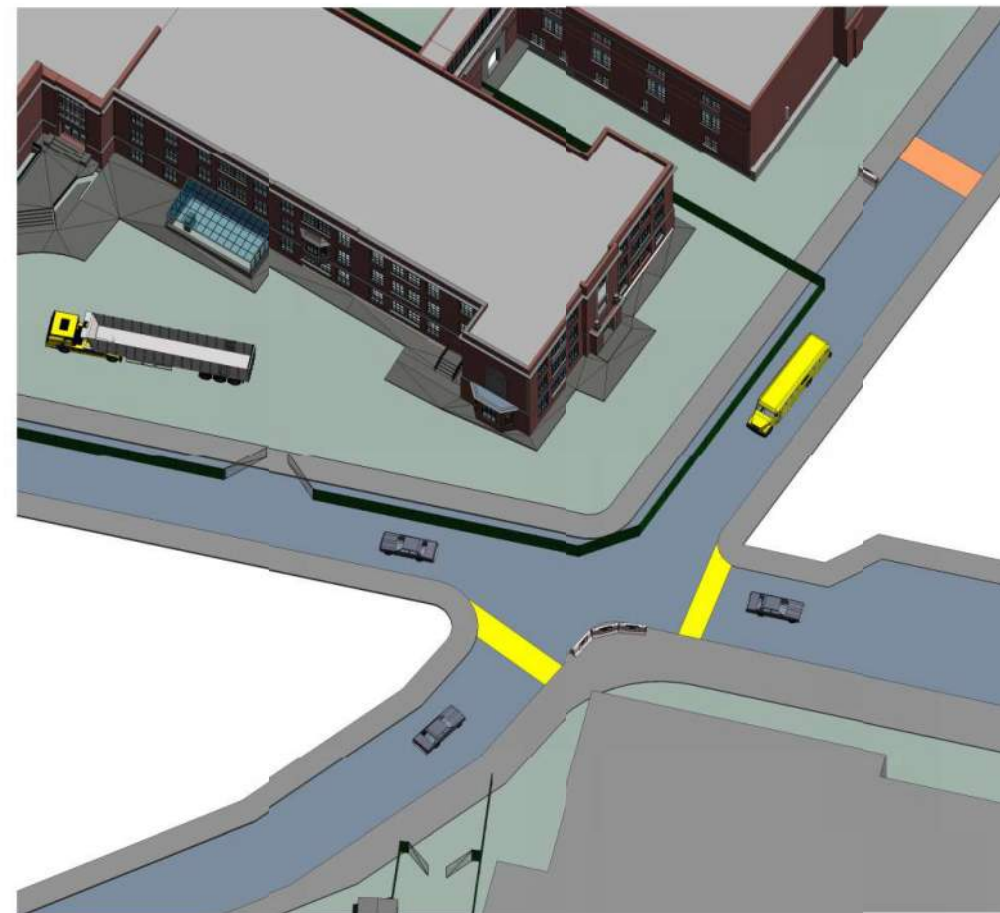
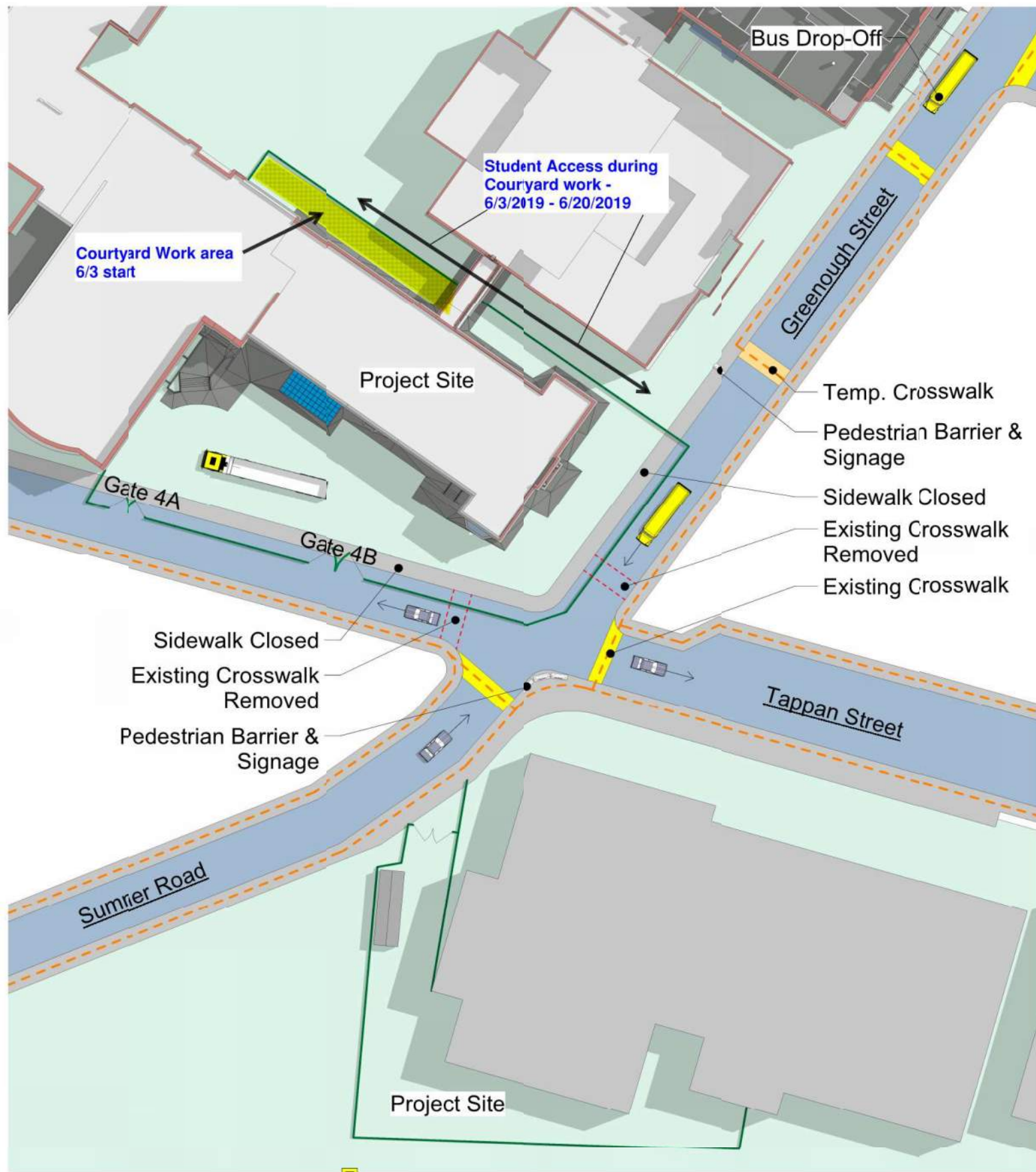
| 2019 | | | | | | 2020 | | | | | | 2021 | | | | | | | | | | | | | | | | |
|---|-----|-----|-----|-----|-----|------|-----|-----|-----|-----|-----|---|-----|-----|-----|-----|-----|-----|-----|-----|-----|-----|-----|-----|-----|-----|-----|-----|
| Jun | Jul | Aug | Sep | Oct | Nov | Dec | Jan | Feb | Mar | Apr | May | Jun | Jul | Aug | Sep | Oct | Nov | Dec | Jan | Feb | Mar | Apr | May | Jun | Jul | Aug | Sep | Oct |
| Phase 1 | | | | | | | | | | | | | | | | | | | | | | | | | | | | |
| Peak Noise Activity - Demolition, Steel Erection, Concrete Placement Cranes and Hoist | | | | | | | | | | | | Non Peak Noise Activity - Interior Building, Exterior Landscape/Sidewalks | | | | | | | | | | | | | | | | |

Brookline High School Brookline, MA

Preliminary Draft Logistic Plan

Scale: NTS





1 STEM Logistics Plan
1/32" = 1'-0"

Brookline High School

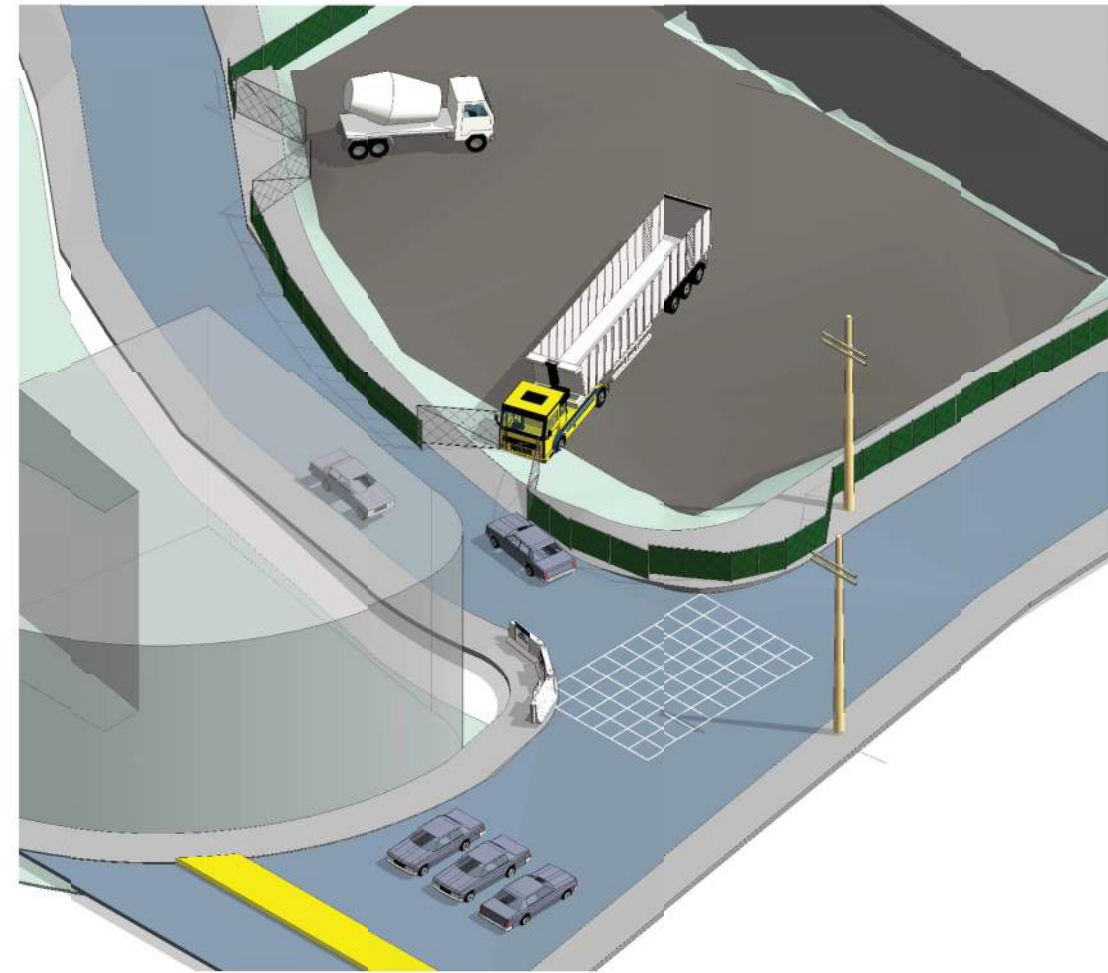
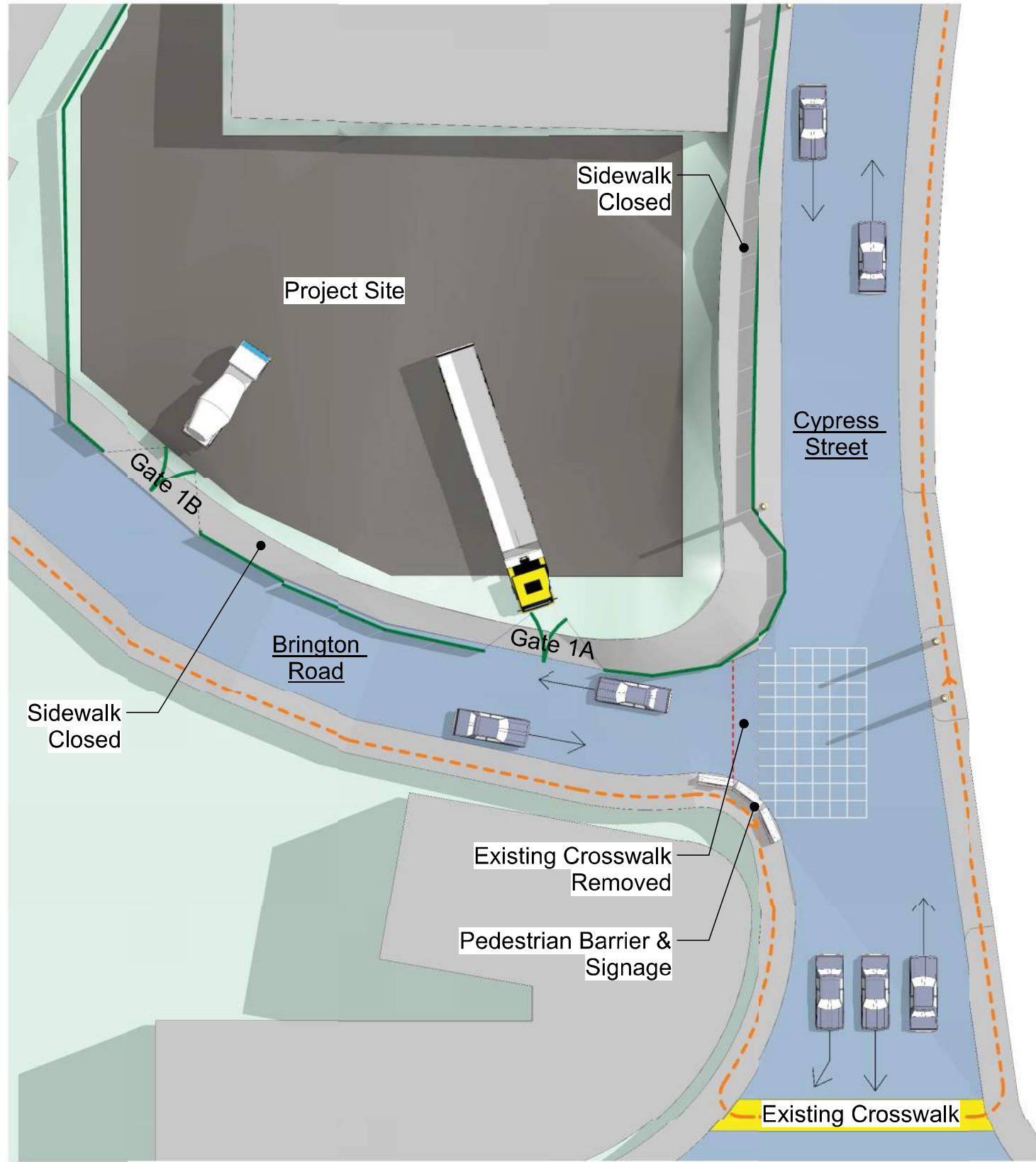
Tappan / Greenough Streets June 21, 2019 - January 6, 2021

L13
Tappan & Greenough Logistics

Scale: NTS



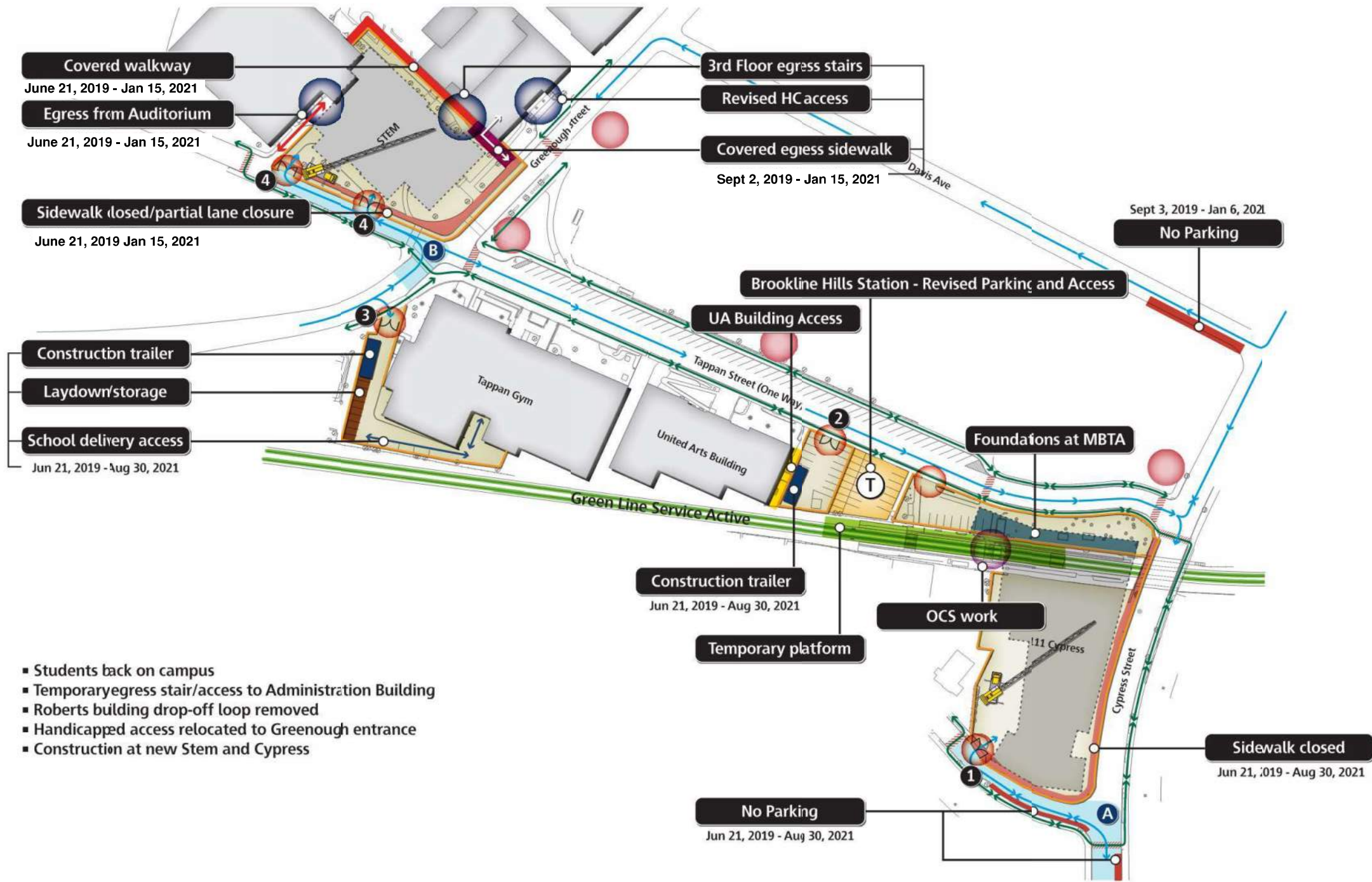
Notes



② Cypress & Brington Road Logistics
1/16" = 1'-0"



Notes



Covered walkway
June 21, 2019 - Jan 15, 2021

Egress from Auditorium
June 21, 2019 - Jan 15, 2021

Sidewalk closed/partial lane closure
June 21, 2019 - Jan 15, 2021

Construction trailer

Laydown/storage

School delivery access
Jun 21, 2019 - Aug 30, 2021

3rd Floor egress stairs

Revised HC access

Covered egress sidewalk
Sept 2, 2019 - Jan 15, 2021

No Parking
Sept 3, 2019 - Jan 6, 2021

Brookline Hills Station - Revised Parking and Access

UA Building Access

Construction trailer
Jun 21, 2019 - Aug 30, 2021

Temporary platform

OCS work

Sidewalk closed
Jun 21, 2019 - Aug 30, 2021

No Parking
Jun 21, 2019 - Aug 30, 2021

- Students back on campus
- Temporary egress stair/access to Administration Building
- Roberts building drop-off loop removed
- Handicapped access relocated to Greenough entrance
- Construction at new Stem and Cypress

Phase 2

Foundations, Steel and Utilities

- I11 Cypress:**
- Foundation/utilities
 - Start steel erection
 - Erect pre-cast platform over Green Line

- Brookline Hills T:**
- Build temporary platform
 - Relocate OCS

- STEM:**
- Foundations
 - Start steel
 - Site utilities
 - Covered sidewalk
 - Temporary 3rd floor egress stairs
 - Temporary auditorium egress

- Traffic/Deliveries:**
- 60 per day
 - A** Traffic holds north & south at Cypress deliveries
 - B** Traffic holds at Tappan/Greenough for deliveries
 - Police details required

Construction Key

- Construction gate
- Construction fence
- Construction traffic
- Pedestrian flow
- Temporary crosswalk
- Muster area

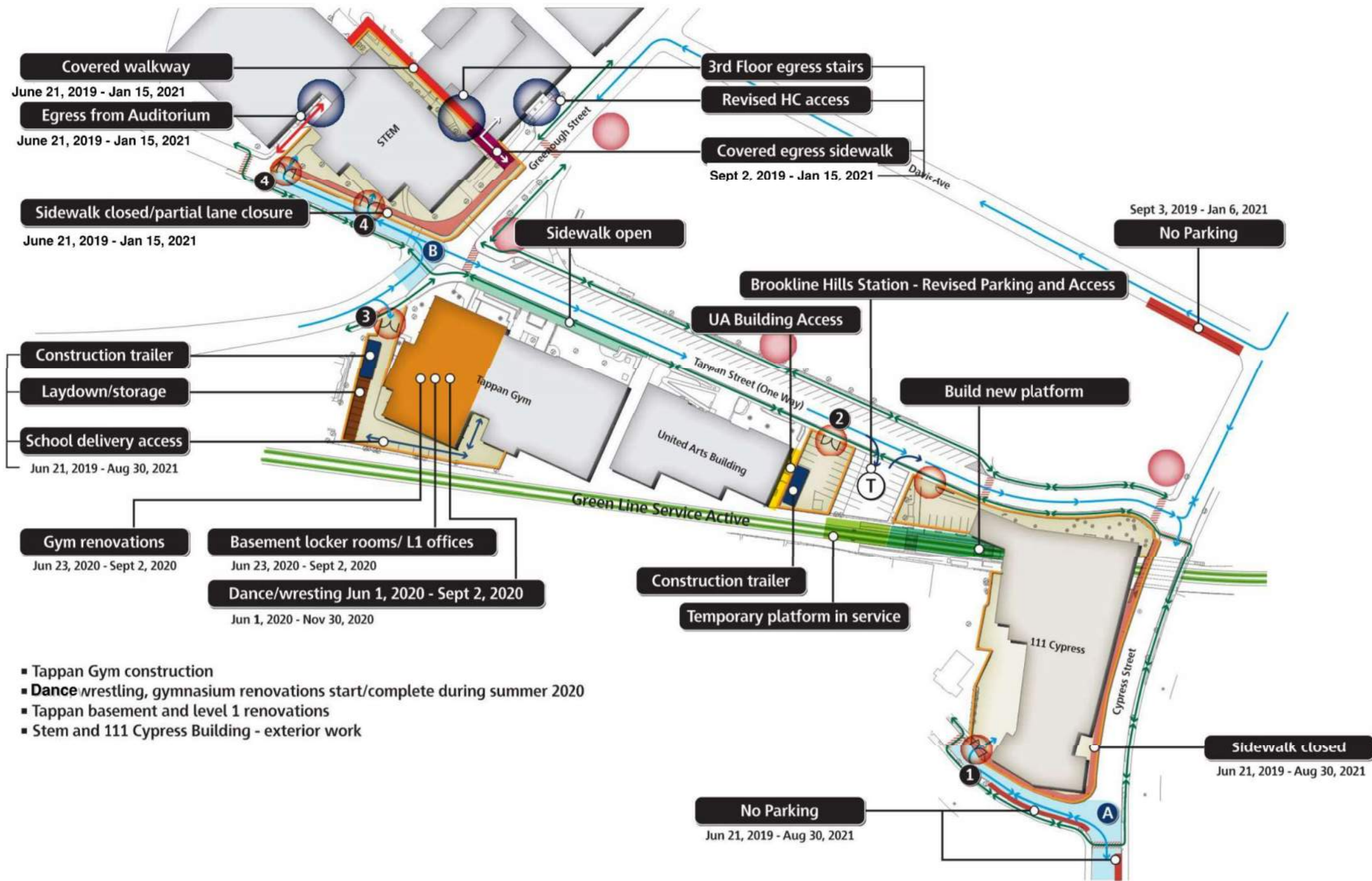
| 2019 | | | | | | | 2020 | | | | | | | 2021 | | | | | | | | | | | | | | |
|---|-----|-----|---------|-----|-----|-----|------|-----|-----|-----|-----|-----|-----|---|-----|-----|-----|-----|-----|-----|-----|-----|-----|-----|-----|-----|-----|-----|
| Jun | Jul | Aug | Sep | Oct | Nov | Dec | Jan | Feb | Mar | Apr | May | Jun | Jul | Aug | Sep | Oct | Nov | Dec | Jan | Feb | Mar | Apr | May | Jun | Jul | Aug | Sep | Oct |
| | | | Phase 2 | | | | | | | | | | | | | | | | | | | | | | | | | |
| Peak Noise Activity - Demolition, Steel Erection, Concrete Placement Cranes and Hoist | | | | | | | | | | | | | | Non Peak Noise Activity - Interior Building, Exterior Landscape/Sidewalks | | | | | | | | | | | | | | |

Brookline High School
Brookline, MA

Preliminary Draft Logistic Plan

Scale: NTS





Phase 3
Concrete Slabs, Tappan Renovation, Rough MEP

- 111 Cypress:**
- Concrete decks
 - Spray fireproofing
 - Rough MEP
 - Curtainwall/exterior enclosure
- Brookline Hills T:**
- Demolition temporary platform (West)
 - Build new platform (East)
- Tappan:**
- Basement/L1 renovation start
 - Basement/L1 area relocated
 - Dance and wrestling closed
- STEM:**
- Steel decks
 - Concrete decks
 - Rough MEP
 - Facade/Curtainwall
 - Roofing
- Traffic/Deliveries:**
- 60 per day
 - A** Traffic holds north & south at Cypress deliveries
 - B** Traffic holds at Tappan/Greenough for deliveries
 - Police details required

- Covered walkway**
June 21, 2019 - Jan 15, 2021
- Egress from Auditorium**
June 21, 2019 - Jan 15, 2021
- Sidewalk closed/partial lane closure**
June 21, 2019 - Jan 15, 2021
- Construction trailer**
- Laydown/storage**
- School delivery access**
Jun 21, 2019 - Aug 30, 2021
- Gym renovations**
Jun 23, 2020 - Sept 2, 2020
- Basement locker rooms/ L1 offices**
Jun 23, 2020 - Sept 2, 2020
- Dance/wrestling** Jun 1, 2020 - Sept 2, 2020
Jun 1, 2020 - Nov 30, 2020

- Tappan Gym construction
- Dance/wrestling, gymnasium renovations start/complete during summer 2020
- Tappan basement and level 1 renovations
- Stem and 111 Cypress Building - exterior work

Construction Key

- Construction gate
- Construction fence
- Construction traffic
- Pedestrian flow
- Temporary crosswalk
- Muster area

| 2019 | | | | | | | 2020 | | | | | | | | | | | | 2021 | | | | | | | | | | | | | | |
|--|-----|-----|-----|-----|-----|-----|------|-----|-----|-----|-----|-----|-----|-----|-----|-----|-----|-----|---|-----|-----|-----|-----|-----|-----|-----|-----|-----|--|--|--|--|--|
| Jun | Jul | Aug | Sep | Oct | Nov | Dec | Jan | Feb | Mar | Apr | May | Jun | Jul | Aug | Sep | Oct | Nov | Dec | Jan | Feb | Mar | Apr | May | Jun | Jul | Aug | Sep | Oct | | | | | |
| | | | | | | | | | | | | | | | | | | | | | | | | | | | | | | | | | |
| | | | | | | | | | | | | | | | | | | | | | | | | | | | | | | | | | |
| Peak Noise Activity - Demolition, Steel Erection, Concrete Placement, Cranes and Hoist | | | | | | | | | | | | | | | | | | | Non Peak Noise Activity - Interior Building, Exterior Landscape/Sidewalks | | | | | | | | | | | | | | |

Brookline High School
Brookline, MA

Preliminary Draft Logistic Plan

Scale: NTS



Phase 4

Exterior Facade, Curtainwall and Roofing

- I11 Cypress:**
- Exterior facade
 - Building exterior tight
 - Interior rough-in

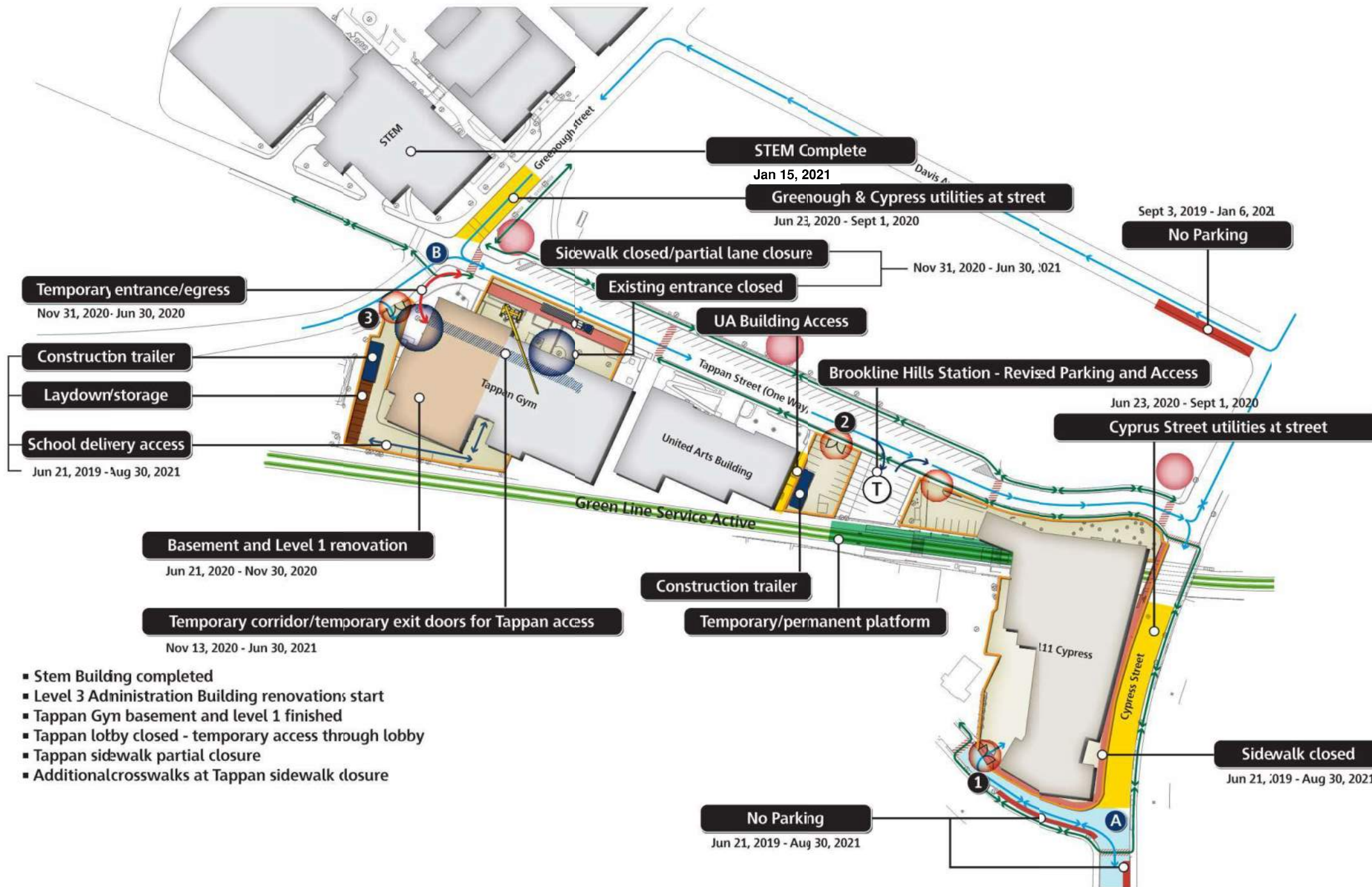
- Tappan Gym:**
- Basement/Level 1 renovations complete
 - Existing entrance closed
 - Temporary entrance for pool/gym
 - Lobby addition construction
 - Tappan Street deliveries
 - Sidewalk closed
 - Temporary sidewalks

- STEM:**
- Testing inspections
 - Final cleaning
 - STEM Building complete Nov 20, 2020
 - Furniture move deliveries

- Traffic/Deliveries:**
- 70 per day
 - A** Traffic holds north & south at Cypress deliveries
 - B** Traffic holds at Tappan/Greenough for deliveries
 - Police details required

Construction Key

- Construction gate
- Construction fence
- Construction traffic
- Pedestrian flow
- Temporary crosswalk
- Muster area



- Temporary entrance/egress**
Nov 31, 2020 - Jun 30, 2020
- Construction trailer**
- Laydown/storage**
- School delivery access**
Jun 21, 2019 - Aug 30, 2021

Basement and Level 1 renovation
Jun 21, 2020 - Nov 30, 2020

Temporary corridor/temporary exit doors for Tappan access
Nov 13, 2020 - Jun 30, 2021

- Stem Building completed
- Level 3 Administration Building renovations start
- Tappan Gym basement and level 1 finished
- Tappan lobby closed - temporary access through lobby
- Tappan sidewalk partial closure
- Additional crosswalks at Tappan sidewalk closure

| 2019 | | | | | | 2020 | | | | | | 2021 | | | | | | | | | | | | | | | | | | | |
|---|-----|-----|-----|-----|-----|------|-----|-----|-----|-----|-----|---|-----|-----|-----|-----|-----|-----|-----|-----|-----|-----|-----|-----|-----|-----|-----|-----|--|--|--|
| Jun | Jul | Aug | Sep | Oct | Nov | Dec | Jan | Feb | Mar | Apr | May | Jun | Jul | Aug | Sep | Oct | Nov | Dec | Jan | Feb | Mar | Apr | May | Jun | Jul | Aug | Sep | Oct | | | |
| | | | | | | | | | | | | Phase 4 | | | | | | | | | | | | | | | | | | | |
| Peak Noise Activity - Demolition, Steel Erection, Concrete Placement Cranes and Hoist | | | | | | | | | | | | Non Peak Noise Activity - Interior Building, Exterior Landscape/Sidewalks | | | | | | | | | | | | | | | | | | | |

Brookline High School

Brookline, MA

Preliminary Draft Logistic Plan

Scale: NTS



Phase 5

Interior Finishes, Inspections, Hardscape and Sidewalks

- 111 Cypress:**
- Completed 6/2/21
 - Interior finishes
 - Furniture relocation
 - Inspections
 - Sidewalk/landscape
 - Final inspections

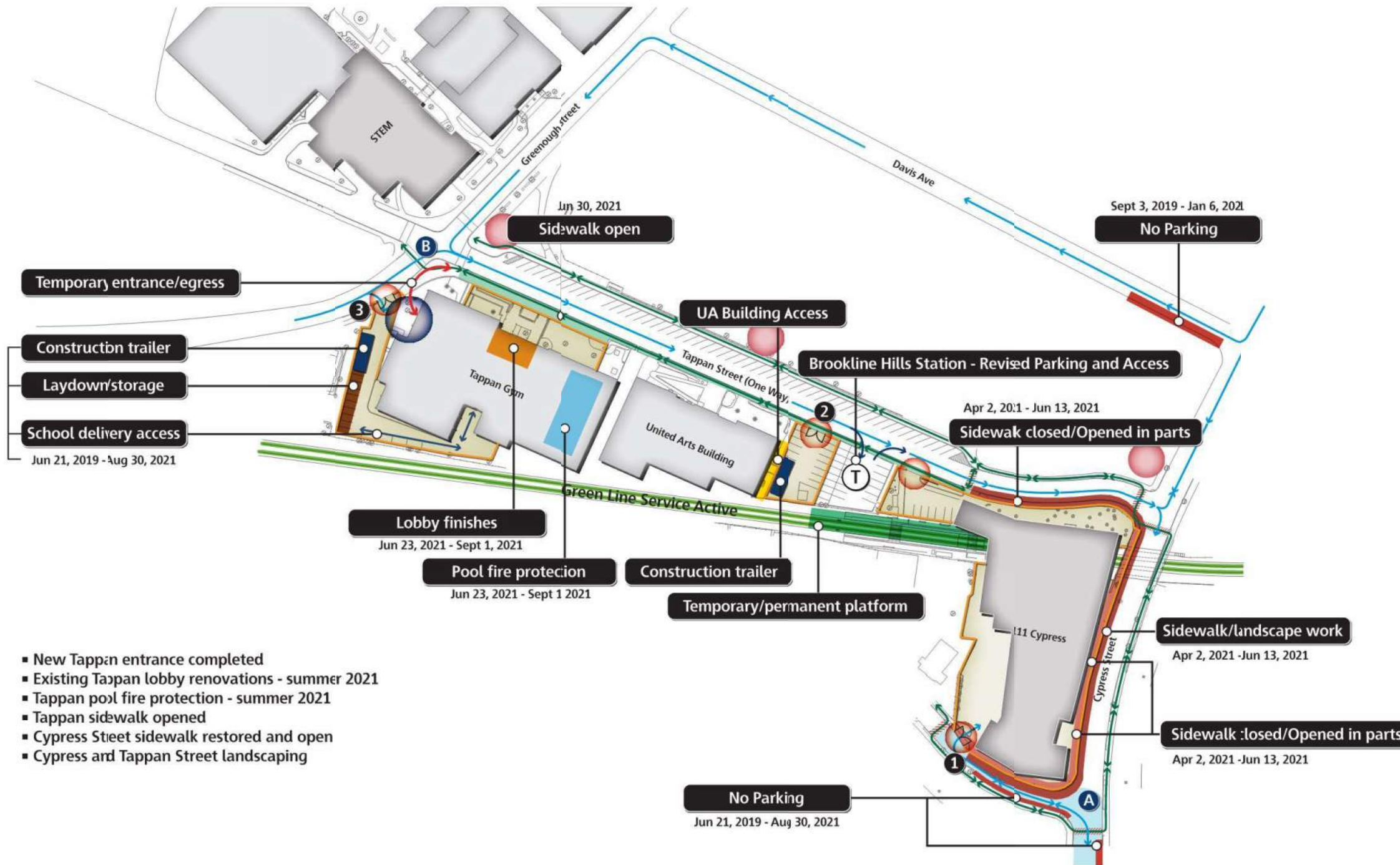
- Brookline Hills T:**
- Complete

- Tappan:**
- Lobby renovations/finishes 6/22/21 - 9/1/21
 - Inspections 9/1/22
 - Sidewalk/landscape 6/22/21 - 9/1/21
 - Pool fire protection 6/21/21 - 9/1/21

- Traffic/Deliveries:**
- 30 per day
 - A** Traffic holds north & south at Cypress deliveries
 - B** Traffic holds at Tappan/Greenough for deliveries
 - Police details required

Construction Key

- Construction gate
- Construction fence
- Construction traffic
- Pedestrian flow
- Temporary crosswalk
- Muster area



- New Tappan entrance completed
- Existing Tappan lobby renovations - summer 2021
- Tappan pool fire protection - summer 2021
- Tappan sidewalk opened
- Cypress Street sidewalk restored and open
- Cypress and Tappan Street landscaping

| 2019 | | | | | | 2020 | | | | | | 2021 | | | | | | | | | | | | | | | | | | | | | | | |
|---|-----|-----|-----|-----|-----|------|-----|-----|-----|-----|-----|---|-----|-----|-----|-----|-----|-----|-----|-----|-----|-----|-----|-----|-----|-----|-----|-----|--|--|--|--|--|--|--|
| Jun | Jul | Aug | Sep | Oct | Nov | Dec | Jan | Feb | Mar | Apr | May | Jun | Jul | Aug | Sep | Oct | Nov | Dec | Jan | Feb | Mar | Apr | May | Jun | Jul | Aug | Sep | Oct | | | | | | | |
| | | | | | | | | | | | | | | | | | | | | | | | | | | | | | | | | | | | |
| Peak Noise Activity - Demolition, Steel Erection, Concrete Placement Cranes and Hoist | | | | | | | | | | | | Non Peak Noise Activity - Interior Building, Exterior Landscape/Sidewalks | | | | | | | | | | | | | | | | | | | | | | | |

Brookline High School

Brookline, MA

Preliminary Draft Logistic Plan

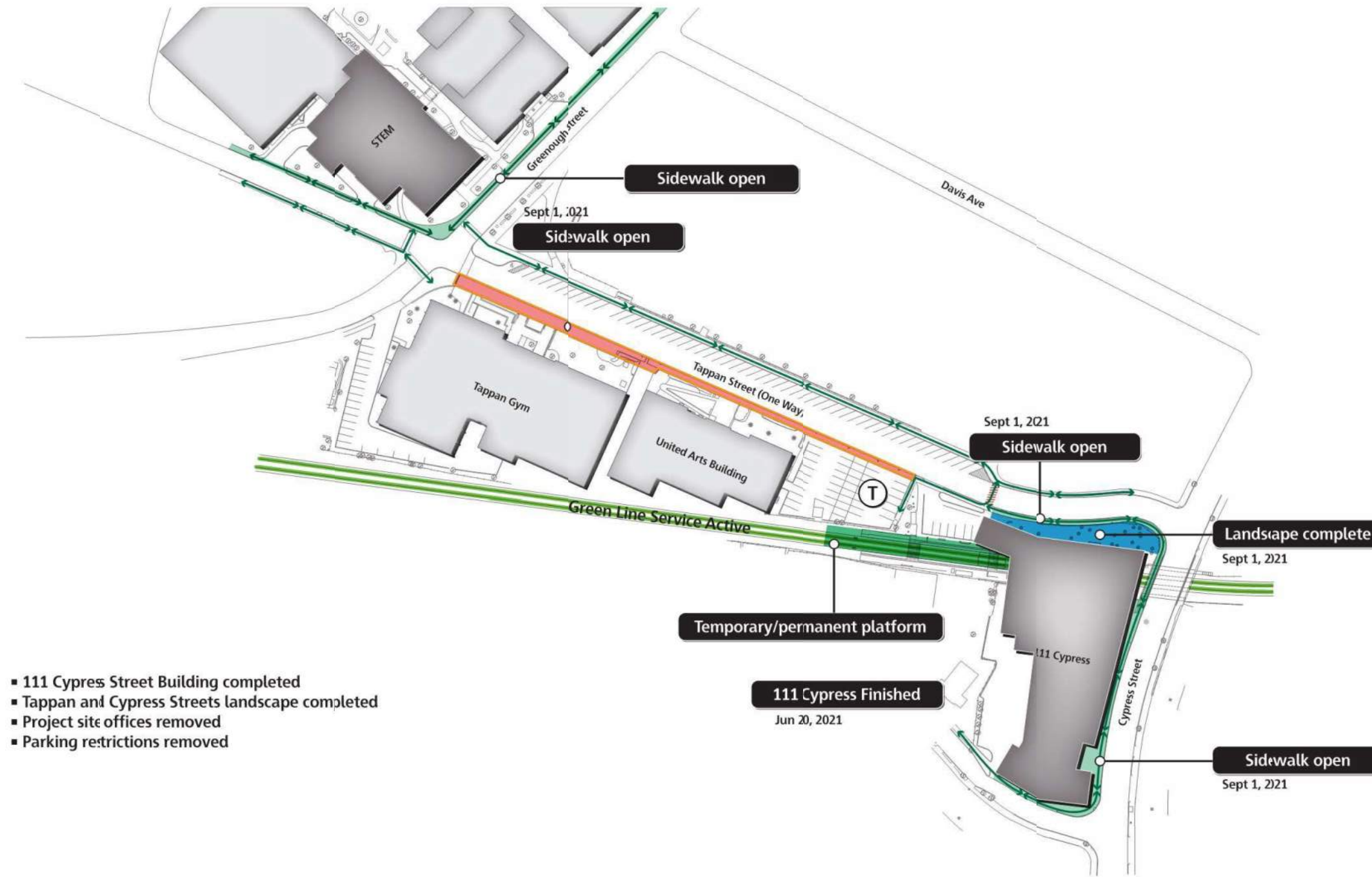
Scale: NTS



Phase 6
Hardscape, Sidewalks and Inspections

- 111 Cypress:**
- Sidewalks completed 9/1/21

- Tappan Gym:**
- Final inspection 8/24/21
 - Pool fire protection 6/21/21 - 9/1/21
 - Completed Nov/Dec 2021



- 111 Cypress Street Building completed
- Tappan and Cypress Streets landscape completed
- Project site offices removed
- Parking restrictions removed

Construction Key

- Construction gate
- Construction fence
- Pedestrian flow

| 2019 | | | | | | 2020 | | | | | | 2021 | | | | | | | | | | | | | | | | | | | | | | | |
|---|-----|-----|-----|-----|-----|------|-----|-----|-----|-----|-----|---|-----|-----|-----|-----|-----|-----|-----|-----|-----|-----|-----|-----|-----|-----|-----|-----|--|--|--|--|--|--|--|
| Jun | Jul | Aug | Sep | Oct | Nov | Dec | Jan | Feb | Mar | Apr | May | Jun | Jul | Aug | Sep | Oct | Nov | Dec | Jan | Feb | Mar | Apr | May | Jun | Jul | Aug | Sep | Oct | | | | | | | |
| | | | | | | | | | | | | | | | | | | | | | | | | | | | | | | | | | | | |
| Peak Noise Activity - Demolition, Steel Erection, Concrete Placement Cranes and Hoist | | | | | | | | | | | | Non Peak Noise Activity - Interior Building, Exterior Landscape/Sidewalks | | | | | | | | | | | | | | | | | | | | | | | |
| Phase 6 | | | | | | | | | | | | | | | | | | | | | | | | | | | | | | | | | | | |

Brookline High School
Brookline, MA

Preliminary Draft Logistic Plan

Scale: NTS

